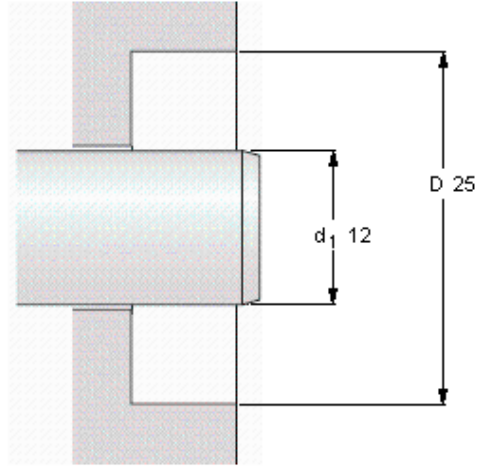
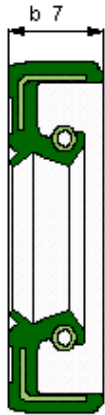


| Základní rozměry | | | Konstrukce | Materiál jazýčku | Označení | skladové číslo pro USA |
|------------------|--------|-------------------------|------------|------------------|-------------------|------------------------|
| Hřídel | Vrtání | Jmenovitá šířka těsnění | | | | |
| d1 | | b | | | | |
| mm | | | - | - | - | - |
| 12 | 25 | 7 | HMSA10 | RG | 12x25x7 HMSA10 RG | 563500 |



Permissible operating temperature [°C / °F]

| | |
|-----------|---------------|
| min | max |
| -40 / -40 | 100 / 210 |
| | short periods |
| | 120 / 250 |

Rotational speed [r/min]

| |
|--|
| 22282 |
| at circumferential speed [m/s / ft/s] |
| 14 / 45,92 |

Pressure differential [MPa / psi]

0,03 / 5

See also "Permissible speeds" and "Chemical and thermal resistance"